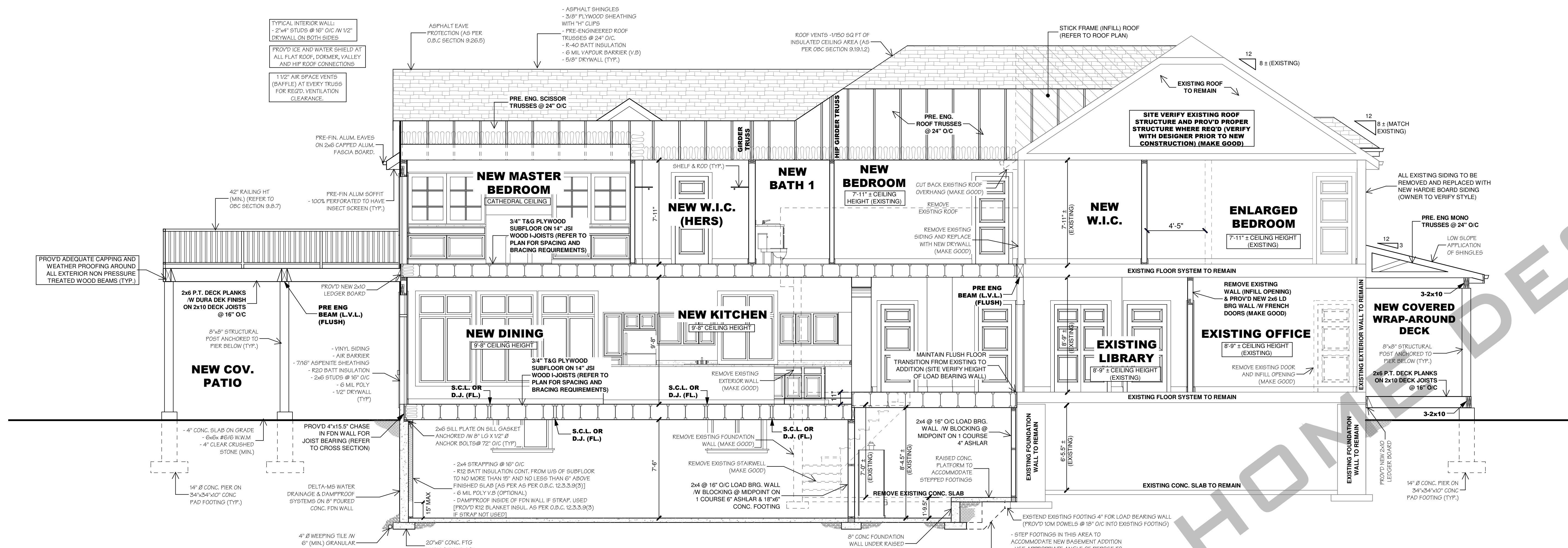


COMMISSION:
**SAMPLE DRAWINGS
ADDITION / RENOVATION**

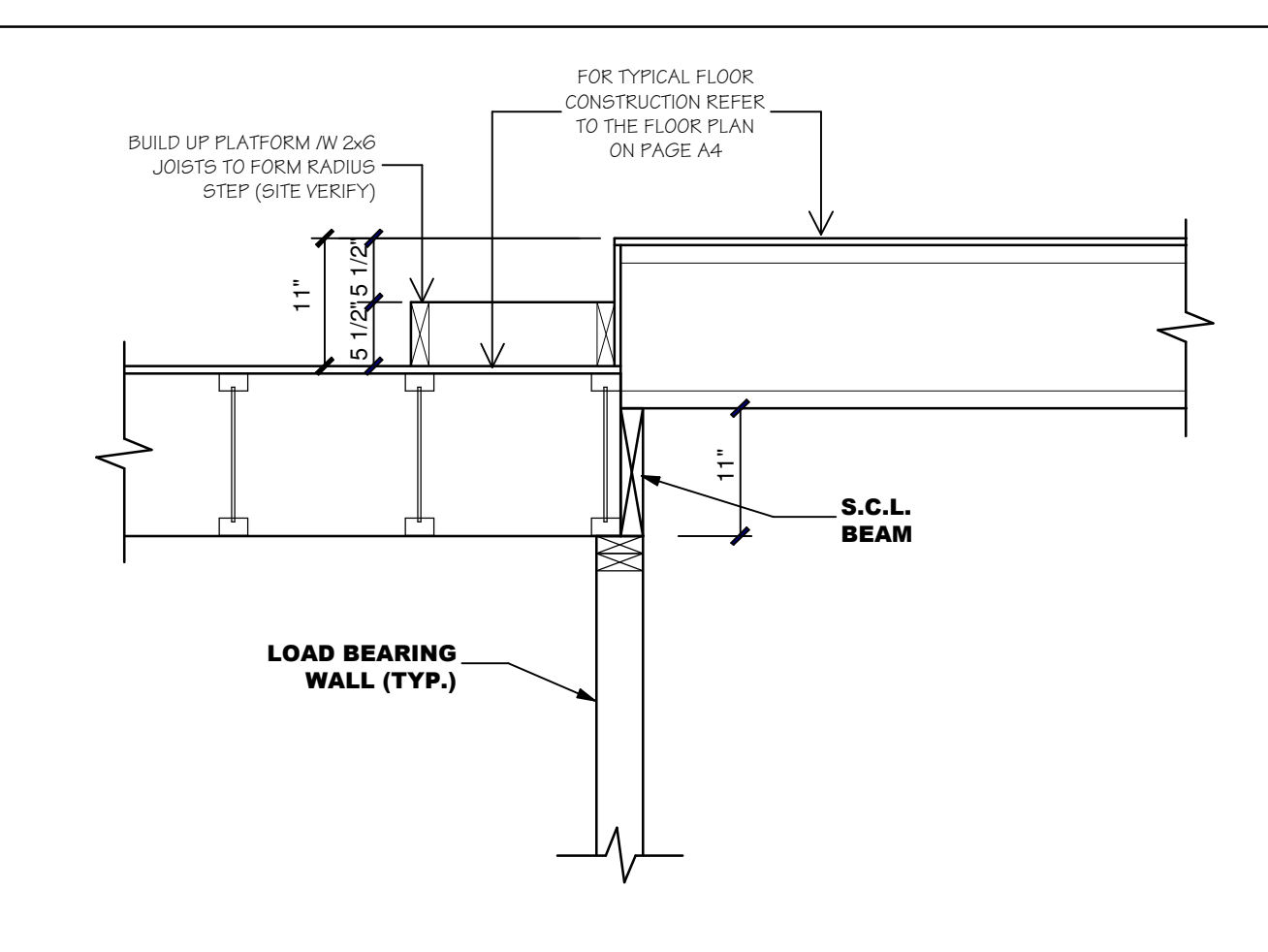
NOTES:
**ALL TYPICAL CONSTRUCTION SHALL
CONFORM TO THE O.B.C. PART 9 (MOST
CURRENT EDITION AND AMENDMENTS)**

- MECHANICAL & ELECTRICAL DESIGN BY CONTRACTOR
- ALL FLOOR DECK LOCATIONS TO BE VERIFIED BY CONTRACTOR
- ALL 3" VENT LOCATIONS TO BE VERIFIED BY CONTRACTOR
- ALL ROOF ATTIC AREAS MUST HAVE ACCESS
- ALL STAIRS TO BE APPROVED BY WAY OF SHOP DRAWINGS PRIOR TO MANUFACTURING
- ALL KITCHEN CABINETS TO BE APPROVED PRIOR TO MANUFACTURING BY WAY OF SHOP DRAWING BY THE SUPPLIER
- KITCHEN LAYOUT TO BE APPROVED BY OWNER AND KITCHEN DESIGNER PRIOR TO MANUFACTURING & INSTALLATION
- ALL ELECTRICAL LAYOUT TO BE VERIFIED ON SITE WITH OWNER/BUILDER & CONTRACTOR
- ROOF LAYOUT & GIRDER TRUSS LOCATIONS TO BE VERIFIED BY ROOF TRUSS MANUFACTURER PRIOR TO MANUFACTURING

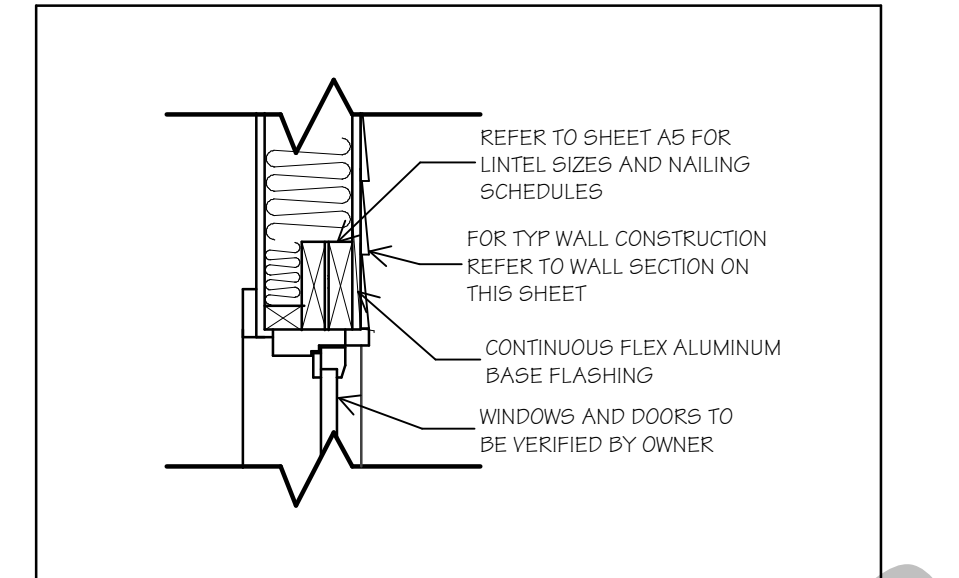
ALL CONTRACTORS AND OR TRADES SHALL VERIFY ALL DIMENSIONS, NOTES, SITE AND REPORT ANY DISCREPANCIES PRIOR TO COMMENCEMENT OF WORK. THIS DRAWING IS NOT TO BE SCALED. ALL DRAWINGS, PRINTS AND RELATED DOCUMENTS ARE THE PROPERTY OF THE DESIGNER AND MUST BE RETURNED UPON REQUEST. REPRODUCTION OF DRAWINGS AND RELATED DOCUMENTS IN PART OR IN WHOLE IS STRICTLY FORBIDDEN WITHOUT WRITTEN CONSENT. DRAWINGS TO BE USED FOR THE PURPOSE FOR WHICH THEY ARE ISSUED.



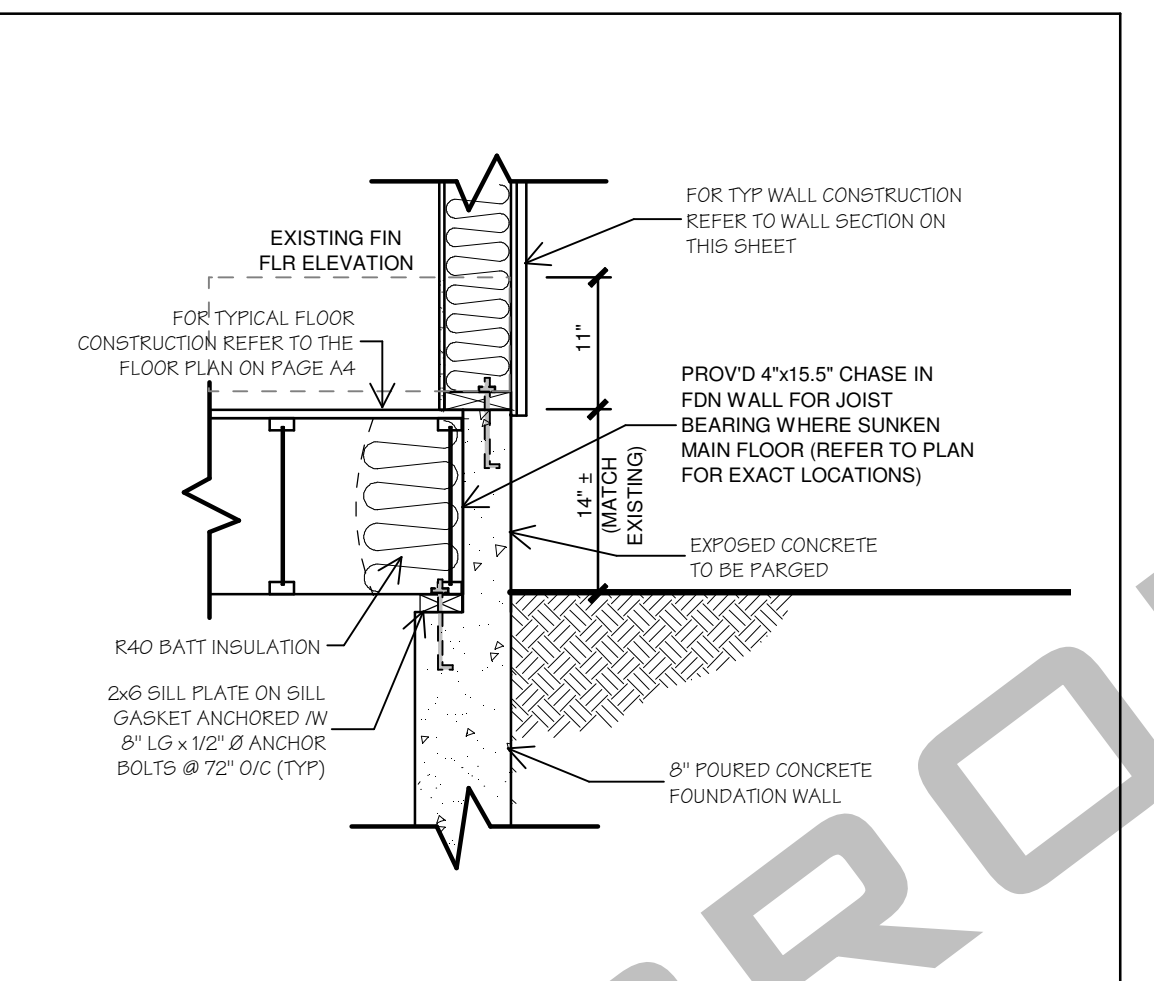
A CROSS SECTION
7-5 SCALE: 1/4" = 1'-0"



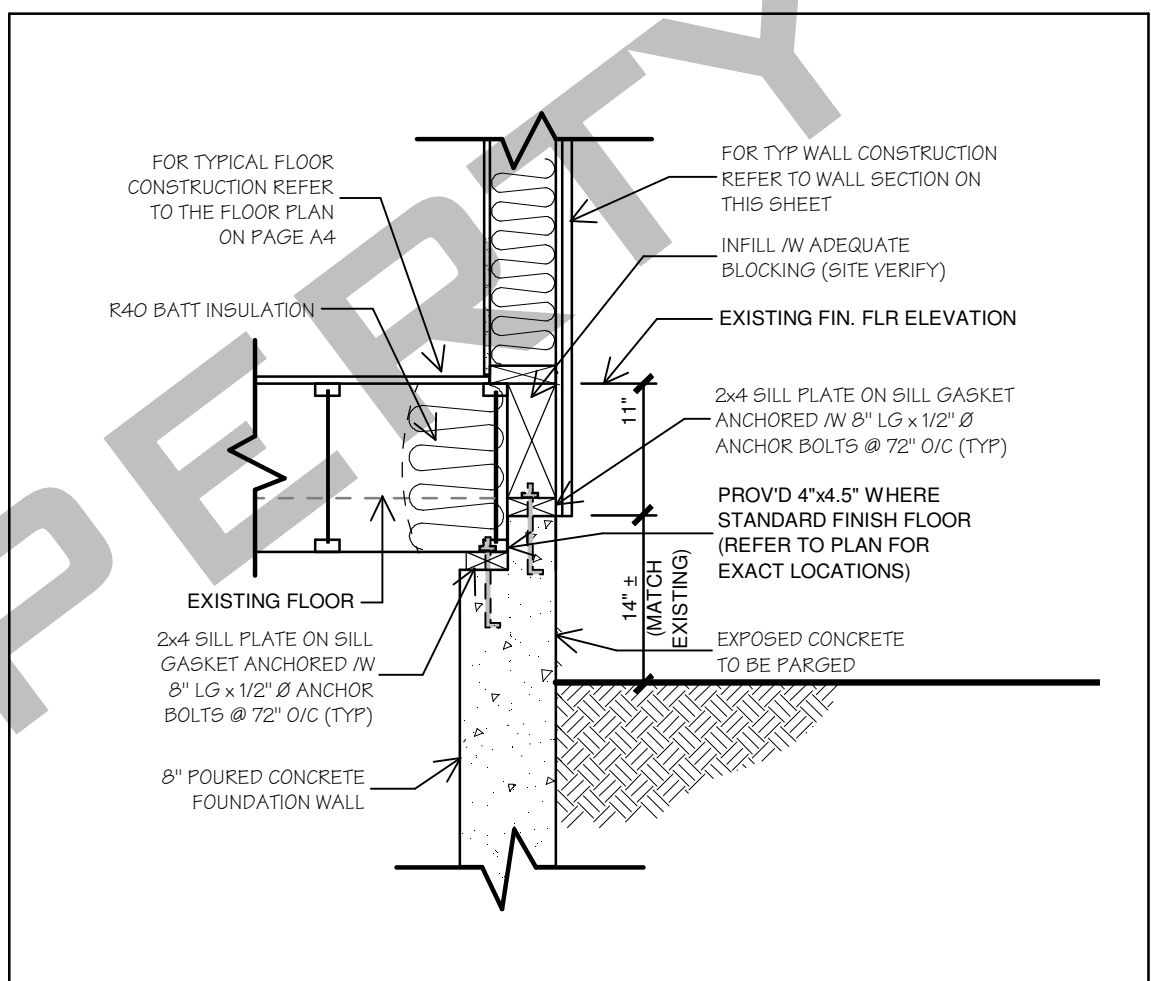
B TRANSITION @ SUNKEN AREA
7-4 SCALE: 3/4" = 1'-0"



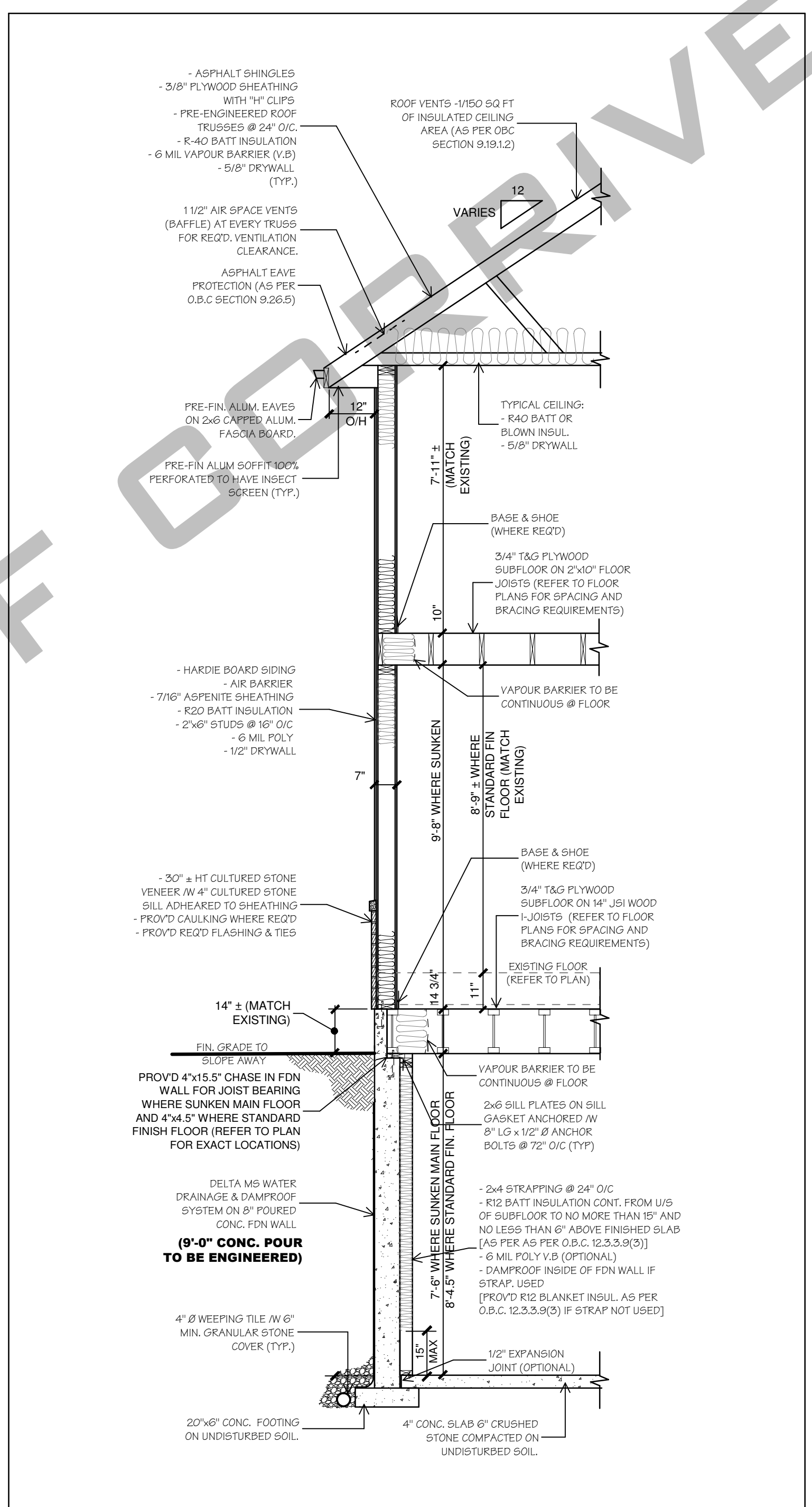
C TYPICAL HEADER DETAIL
SCALE: 1" = 1'-0"



**D TYPICAL JOIST TO FOUNDATION
CONNECTION DETAIL
(SUNKEN FLOOR AREAS)**
SCALE: 3/4" = 1'-0"



**E TYPICAL JOIST TO FOUNDATION
CONNECTION DETAIL
(STANDARD FINISH FLOOR)**
SCALE: 3/4" = 1'-0"



F TYPICAL WALL SECTION
SCALE: 3/8" = 1'-0"

LIST OF ABBREVIATIONS

ALUM. = ALUMINUM	N.T.S. = NOT TO SCALE
BLDG. = BUILDING	O.B.C. = ONTARIO BUILDING CODE
BSMT. = BASEMENT	O.C. = ON CENTER
BTM = BOTTOM	P.E.S. = PRE-ENGINEERED STEEL
CANT. = CANTILEVER	P.F.E.H. = PRE-ENGINEERED HEADER
CATH. CLO. = CATHEDRAL CEILING	P.F.F.N. = PRE-FINISHED
COL. = COLUMN	P.F.T. = PRESSURE TREATED
CONT. = CONTINUOUS	P.L.A. = POINT LOAD ABOVE
CONC. = CONCRETE	REIN. = REINFORCED
CONG. = CONCRETE	RIGID = RIGID
GLG HT. = CEILING HEIGHT	RTRK. = RAFTER
CLG TRNS. = CEILING TRANSITION	S.G.A. = INTERCONNECTED SMOKE
DBL. PLT. = DOUBLE PLATE	S.I.L. = STEEL BEAM
D.L. OR DEL. JST. = DOUBLE JOIST	SIL. BM. = STEEL BEAM
EX. FAN OR E.F. = EXHAUST FAN	SOG. = SUB-ON GRADE
FIN. OR FND. = FOUNDATION	SQ. FT. = SQUARE FOOTAGE
FIN. FLR. = FINISHED FLOOR	TYP. = TYPICAL
FL. = FLASH	T.L. OR TRL. JST. = TRIPLE JOIST
FTD. = FOOTING	UNEX. = UNEXCAVATED
HSS. = HOLLOW STRUCTURAL STEEL	UNFIN. = UNFINISHED
H.W.T. = HOT WATER TANK	V.B. = VAPOUR BARRIER
L.V.L. = LAMINATED VENEER LUMBER	W.M. = WELDED WIRE MESH
M.T. INSUL. = METAL INSULATED	

WOOD LINTEL SCHEDULE
(O.B.C. 9.23.12.3)

LINTEL SUPPORTING	LINTEL SIZE	MAXIMUM SPAN, ft.					INTERIOR WALLS
		1.0	1.5	2.0	2.5	3.0	
LIMITED ATTIC STORAGE AND CEILING ONLY	2-11/2 x 3-1/2 2-11/2 x 5-1/2 2-11/2 x 7-1/4 2-11/2 x 9-1/4 2-11/2 x 11-1/4	17'-4"	17'-4"	17'-4"	17'-4"	17'-4"	4'-2" 6'-4" 9'-0" 9'-0" 9'-0"
ROOF AND CEILING ONLY	2-11/2 x 3-1/2 2-11/2 x 5-1/2 2-11/2 x 7-1/4 2-11/2 x 9-1/4 2-11/2 x 11-1/4	17'-4"	17'-4"	17'-4"	17'-4"	17'-4"	4'-2" 6'-4" 9'-0" 9'-0" 9'-0"
ROOF AND CEILING ONLY (PROTECT FROM WEATHER)	2-11/2 x 3-1/2 2-11/2 x 5-1/2 2-11/2 x 7-1/4 2-11/2 x 9-1/4 2-11/2 x 11-1/4	17'-4"	17'-4"	17'-4"	17'-4"	17'-4"	4'-2" 6'-4" 9'-0" 9'-0" 9'-0"
ROOF AND CEILING ONLY (PROTECT FROM WEATHER)	2-11/2 x 3-1/2 2-11/2 x 5-1/2 2-11/2 x 7-1/4 2-11/2 x 9-1/4 2-11/2 x 11-1/4	17'-4"	17'-4"	17'-4"	17'-4"	17'-4"	4'-2" 6'-4" 9'-0" 9'-0" 9'-0"
ROOF AND CEILING ONLY (PROTECT FROM WEATHER)	2-11/2 x 3-1/2 2-11/2 x 5-1/2 2-11/2 x 7-1/4 2-11/2 x 9-1/4 2-11/2 x 11-1/4	17'-4"	17'-4"	17'-4"	17'-4"	17'-4"	4'-2" 6'-4" 9'-0" 9'-0" 9'-0"
ROOF AND CEILING ONLY (PROTECT FROM WEATHER)	2-11/2 x 3-1/2 2-11/2 x 5-1/2 2-11/2 x 7-1/4 2-11/2 x 9-1/4 2-11/2 x 11-1/4	17'-4"	17'-4"	17'-4"	17'-4"	17'-4"	4'-2" 6'-4" 9'-0" 9'-0" 9'-0"
ROOF AND CEILING ONLY (PROTECT FROM WEATHER)	2-11/2 x 3-1/2 2-11/2 x 5-1/2 2-11/2 x 7-1/4 2-11/2 x 9-1/4 2-11/2 x 11-1/4	17'-4"	17'-4"	17'-4"	17'-4"	17'-4"	4'-2" 6'-4" 9'-0" 9'-0" 9'-0"
ROOF AND CEILING ONLY (PROTECT FROM WEATHER)	2-11/2 x 3-1/2 2-11/2 x 5-1/2 2-11/2 x 7-1/4 2-11/2 x 9-1/4 2-11/2 x 11-1/4	17'-4"	17'-4"	17'-4"	17'-4"	17'-4"	4'-2" 6'-4" 9'-0" 9'-0" 9'-0"

FASTENERS FOR SHEATHING AND SUBFLORING
(O.B.C. 9.23.3.5)

ELEMENT	COMMON OR SPIRAL NAILS	RING THREAD NAILS OR SCREWS	ROOFING NAILS	STAPLES	MINIMUM NUMBER OR MAXIMUM SPACING OF FASTENERS
BOARD LUMBER 1 1/4" OR WIDER	2"	1 3/4"	N/A	2"	2 PER SUPPORT
BOARD LUMBER MORE THAN 1 1/4" WIDE	2"	1 3/4"	N/A	2"	2 PER SUPPORT
FIBERGLASS SHEATHING UP TO 1/2" THICK	N/A	N/A	1 3/4"	1 1/2"	5 7/8" O.C.
OPTIMUM SHEATHING UP TO 1/2" THICK	N/A	N/A	1 3/4"	N/A	ALONG EDGES AND 11 3/4" O.C.
PLYWOOD, OSB OR WAFERSBOARD UP TO 3/8" THICK	2"	1 3/4"	N/A	1 1/2"	ALONG INTERMEDIATE EDGES AND 11 3/4" O.C.
PLYWOOD, OSB OR WAFERSBOARD FROM 3/8" TO 5/8" THICK	2"	1 3/4"	N/A	2"	2 PER SUPPORT
PLYWOOD, OSB, OR WAFERSBOARD OVER 5/8" THICK	2 1/4"	2"	N/A	N/A	SUPPORTS

NAILING FOR FRAMING
(O.B.C. 9.23.3.4)

CONSTRUCTION DETAIL	MINIMUM LENGTH OF NAILS, in.	MINIMUM NUMBER OR MAXIMUM SPACING OF NAILS
FLOOR JOISTS TO PLATE - TOE NAIL	3 1/4"	2
WOOD OR METAL STRAPPING TO UNDERSIDE OF FLOOR JOISTS	2 1/4"	2
CROSS BRIDGING TO JOISTS	2 1/4"	2 AT EACH END
DOUBLE HEADER OR TRIMMER JOISTS	3"	11 3/4" H O.C.
FLOOR JOIST TO STUD (BALLROOM CONSTRUCTION)	3"	2
LEADER STRIP TO WOOD BEAM	3 1/4"	2 PER JOIST
JOIST TO JOIST BRACE (SEE ALSO 9.23.3.5)	3"	2 AT EACH END
HEADER JOIST END NAILED TO JOISTS ALONG PERIMETER	4"	3
TAIL JOIST TO ADJACENT HEADER JOIST (END NAILED) AROUND OPENINGS	3 1/4"	3
EACH HEADER JOIST TO ADJACENT TRIMMER JOIST (END NAILED) AROUND OPENINGS	4"	3
STUD TO WALL PLATE (EACH END) TOE NAIL OR END NAIL	2 1/2"	4
DOUBLED STUDS AT OPENINGS, OR STUDS AT WALLS OR WALL INTERSECTIONS AND CORNERS	3"	30" H O.C.
DOUBLED TOP WALL PLATES	3 1/4"	23 5/8" O.C.
BOTTOM WALL PLATE OR SOLE PLATE TO JOISTS OR BRACING (EXTERIOR WALLS)	3 1/4"	15 3/4" O.C.
INTERIOR WALLS TO FRAMING OR SUBFLOORING	3 1/4"	23 5/8" O.C.
HORIZONTAL MEMBER OVER OPENINGS IN NON-LOADBEARING WALLS - EACH END	3 1/4"	2
LINTELS TO STUDS	3 1/4"	2 AT EACH END
CEILING JOIST TO PLATE - TOE NAIL EACH END	3 1/4"	2
ROOF RAFTER, ROOF TRUSS OR ROOF JOIST TO PLATE - TOE NAIL	3 1/4"	3
RAFTER TO JOIST (WITH RIDGE SUPPORTED)	4"	2
RAFTER TO JOIST (WITH RIDGE SUPPORTED)	3"	3
RAFTER TO JOIST (WITH RIDGE SUPPORTED)	3"	3
GUSSET PLATE TO EACH RAFTER AT PEAK	2 1/4"	4
RAFTER AT RIDGE BOARD - TOE NAIL - END NAIL	3 1/4"	3
GOLLAKE TIE TO RAFTER - EACH END	3"	3
GOLLAKE TIE LATERAL SUPPORT TO EACH RAFTER	2 1/4"	2
ROOF STRUT TO RAFTER	3"	3
ROOF STRUT TO LOADBEARING WALL - TOE NAIL	3 1/4"	2
2" x 6" OR LESS PLANK DECKING TO SUPPORT	3 1/4"	2
PLANK DECKING WIDER THAN 2" x 6" TO SUPPORT	3 1/4"	3
2" DECK LAD PLANK DECKING TO SUPPORT (TOE NAIL)	3"	1
2 in EDGE LAD PLANK TO EACH OTHER	3"	17 3/4" O.C.

DRAWING LIST

NO.	DATE	REVISION	BY
A1			
A2			
A3			
A4			
A5			
A6			
A7			

CERTIFICATION:

DR. BY:	CH. BY:	DATE:	JOB #:

**CROSS SECTION
TYPICAL WALL SECTION
TYPICAL DETAILS
TABLES AND CHARTS**

SCALE: AS SHOWN

TITLE: CROSS SECTION TYPICAL WALL SECTION TYPICAL DETAILS TABLES AND CHARTS

SHEET No. **7 OF 7 A7**